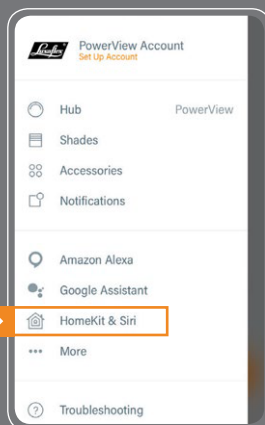


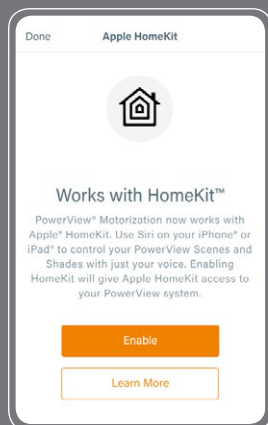
BEFORE YOU BEGIN

In order to take advantage of PowerView® integration with Apple® Home, you need:

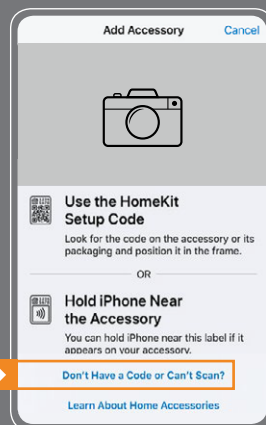
- A PowerView® Hub, Gen 2, updated with the latest firmware
- A Apple Home setup code (located on the bottom of the PowerView® Hub)
- An iPhone® or iPad® with the latest version of iOS and an Apple ID signed into iCloud
- The Apple Home app downloaded and installed on your iPhone or iPad



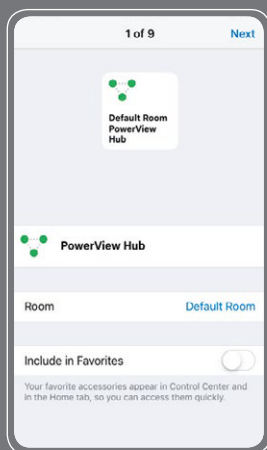
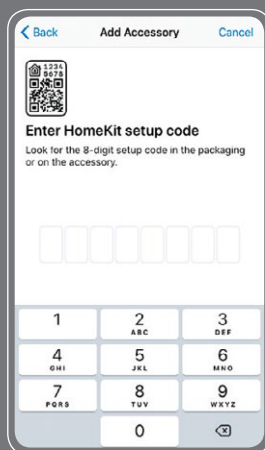
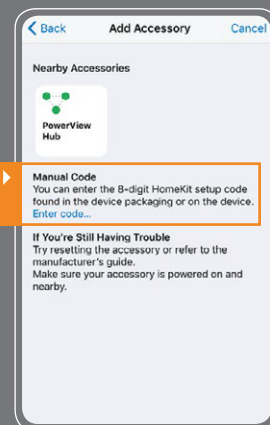
1 Open the PowerView® App on your iPhone or iPad, access the menu and select Home & Siri.



2 Select Enable.



3 Select the option to manually enter the HomeKit setup code.



4 Locate the setup code on the bottom of the PowerView® Hub and enter it as indicated. Keep the default settings shown for your Hub and all accessories. PowerView® will automatically sync your settings with HomeKit in the next step.



5 Follow the steps in the PowerView® App to complete the integration. You will:

- a. Add your PowerView® Hub and Shades to HomeKit as accessories.
- b. Synchronize all Shade, Room and Scene data between the PowerView® and Apple Home apps.

TIPS

- Use of the PowerView® Remote to control PowerView® shades integrated with Apple Home is not recommended. For optimal system performance, the Apple Home app, PowerView® App and Scene Controller are the recommended control options.
- Complete all Shade, Room and Scene configuration in the PowerView® App prior to enabling Apple Home.
- Make any continual edits to Shades, Rooms or Scenes in the PowerView® App. These edits will be pushed to Apple Home.
- If any changes to Shade and/or Scene information are made in the Apple Home app, you will need to open the PowerView® App to confirm those changes, and resolve any conflicts.
- Once Apple Home is enabled, it is recommended that the Apple Home admin be solely responsible for making any changes to PowerView® information for best operation and experience. The Apple Home admin is the user who added the PowerView® Hub as an accessory to their Home.

